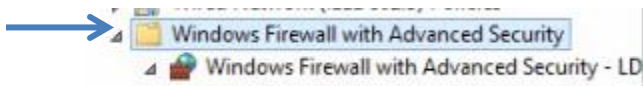


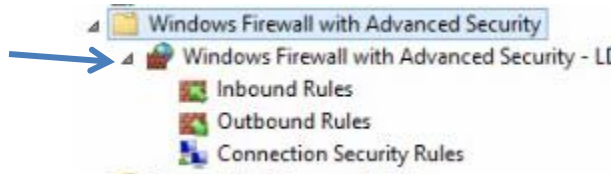
Begin your lab exercise by clicking Next on the Introductory Page

Configuring Authentication Exemption

1. On Server Manager Page, click on Tools, Group Policy Management
2. Expand contoso.com and right-click on the **exemption firewall rule for contoso** GPO
3. Select **Edit** from the drop down menu
4. Select **computer configuration, policies, windows settings, security settings, windows firewall with advanced security**
5. On the left pane expand **windows firewall with advanced security**



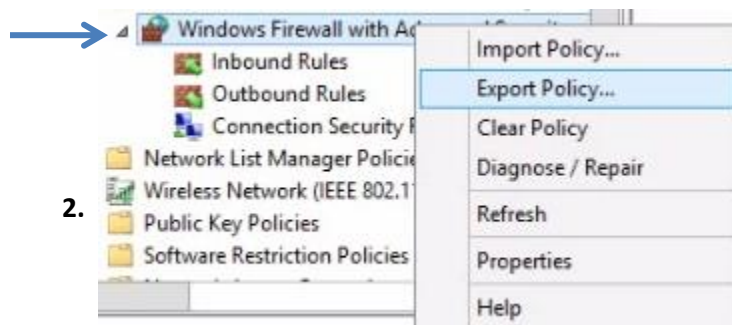
6. Expand **windows firewall with advanced security**



7. Double click on **connection security rules**, right-click on **connection security rules** and select **New Rule**
8. Select **Authentication Exemption**, then click **Next** to continue
9. Select **Add** and type **192.168.10.5**, then press **Enter**
10. Click in the **To** box and type **192.168.10.20**, then press **Enter**
11. Click on **OK** to close the **IP Address** box
12. Click on Next to continue
13. Accept Domain, public and private profiles and click Next to continue
14. Type the name of the rule **contoso exemption**, then press Enter
15. Click on **Finish**

Exporting and Importing firewall policies

1. Right-click on **Windows Firewall with Advanced Security**

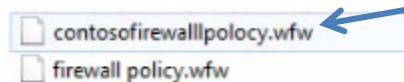


- 2.

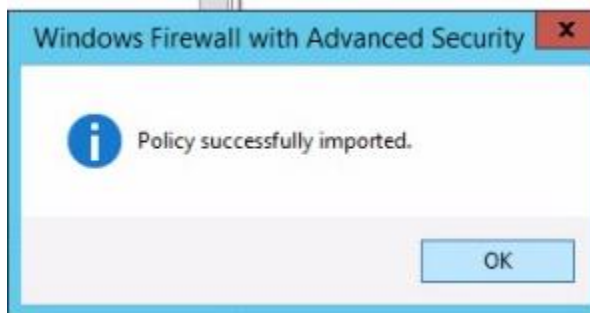
3. Select **Export Policy**
4. Type the name of the Policy, **firewall policy**, then press **Enter**
5. Click on **Save** to save the policy
6. Click on **OK** at the prompt **Policy successfully exported**
7. Right-click on **Windows Firewall with Advanced Security**
8. Select **Import Policy**
9. Select yes to the prompt **Do you want to import a policy now?**



10. Select **contosofirewall policy.wfw**, and click **Open**



11. Click OK on **Policy successfully imported**



12. Close Group Policy management Editor, close all other windows until you are at Server Manager Dashboard Screen

End of Lab