

Configure the following IP Address Options on Server 1

Configuring Static/manual ip address options

IP Address = 192.168.10.21

Subnet Mask =255.255.255.0

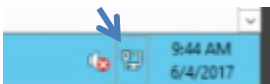
Default Gateway = 192.168.10.1

Preferred DNS= 192.168.10.2

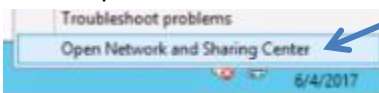
Alternate DNS=192.168.103

Click Next to begin your Lab Exercise

1. Right-click your connection icon on the task bar



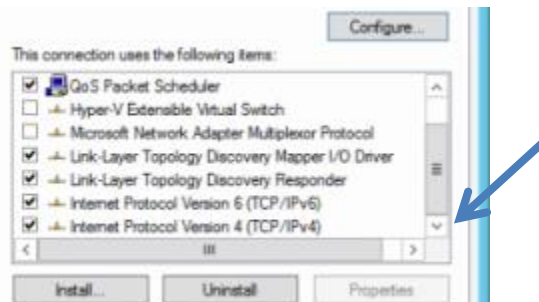
2. Select Open **Network and Sharing Center**



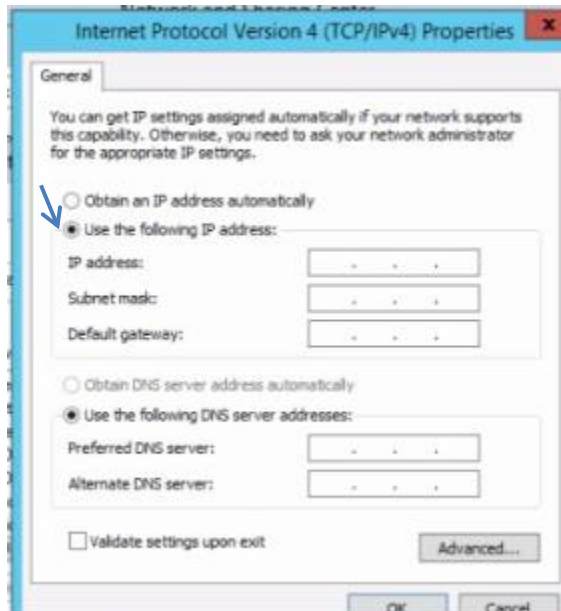
3. Select **change adapter settings**
4. Right-click on **Ethernet contoso.com** and click on **properties**



5. Click the down arrow on the **Ethernet properties** box



6. Select **Internet Protocol Version 4 (TCP/IPv4)**
7. Click on Properties
8. Select **Use the following IP Address**



9. Click in the IP Address box
10. Using the onscreen key board enter the following IP address
192.168.10 move your cursor inside the last section and type 21

Click inside the subnet mask box

Click inside the Default Gateway box and enter the following

192.168.10 move your cursor inside the last section and enter **1**

11. Click in the preferred DNS box and enter the following
192.168.10 move the cursor into the last section and enter **2**

Click in the Alternate DNS box and enter

192.168.10 move the cursor inside the last section and enter **3**

12. Click on **OK**, then click on Close
13. Close the Network Connections window
14. Close the Network and sharing Window

End of Lab